

dame

Beethoven symphony No. 7 m. 1
Vivace

Flute 1,2

Musical score for Flute 1 and 2 parts, starting with Beethoven's Symphony No. 7, m. 1. The score is in 6/8 time and B-flat major. It features dynamic markings such as *f*, *sf*, and *ff*, along with phrasing slurs and accents. The piece concludes with a key signature change to D major and a 4/4 time signature.

Mozart Sonata for 2 pianos

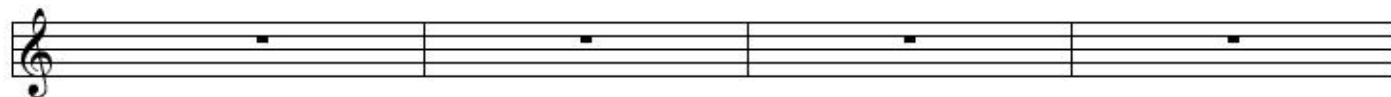
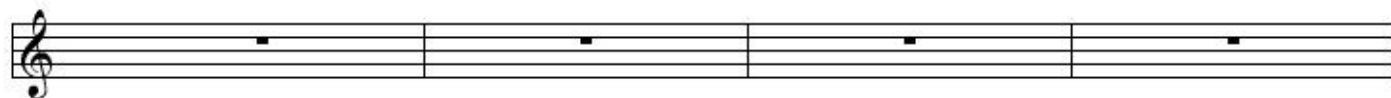
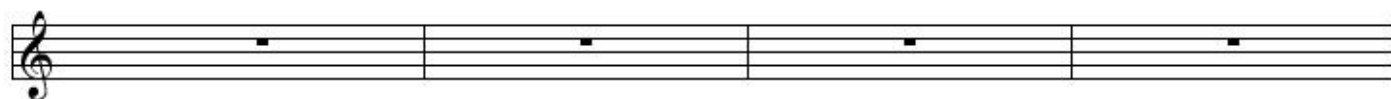
B.
Allegro

leggero

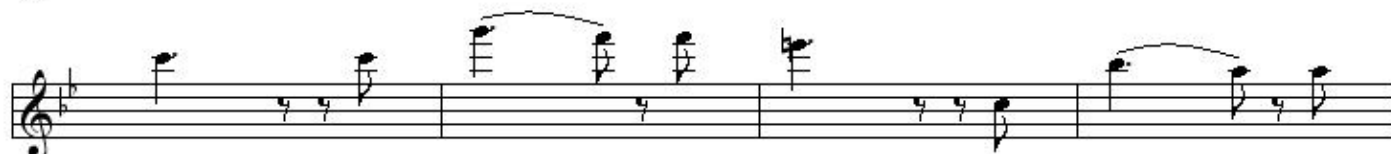
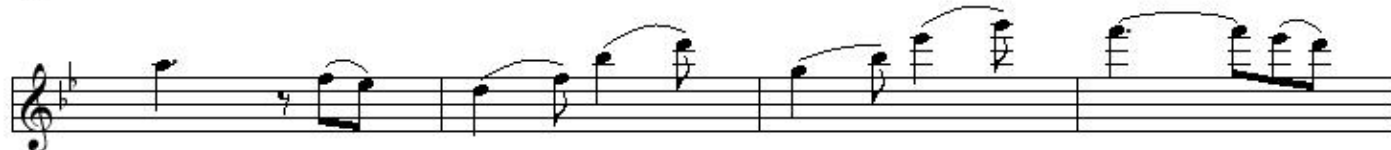
Musical score for the B. Allegro section of Mozart's Sonata for 2 pianos, Flute part. The score is in 4/4 time and C major. It begins with a piano (*p*) dynamic and includes a *leggero* marking. The section features a prominent sixteenth-note pattern in the right hand.

C.
Mozart oboe concerto

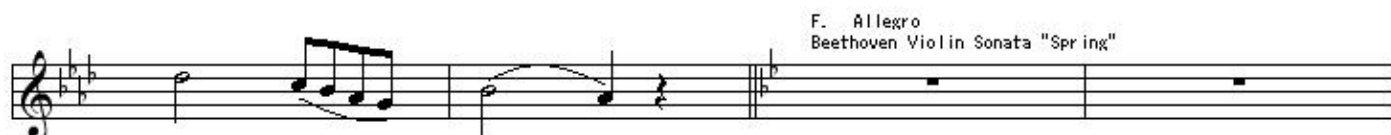
Musical score for the C. section of Mozart's Oboe Concerto, Flute part. The score is in 4/4 time and C major. It features a melodic line with grace notes and slurs.



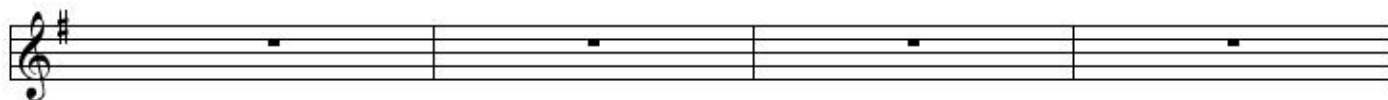
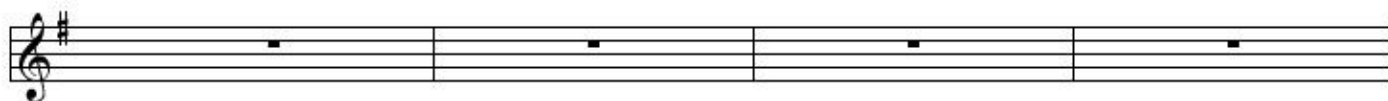
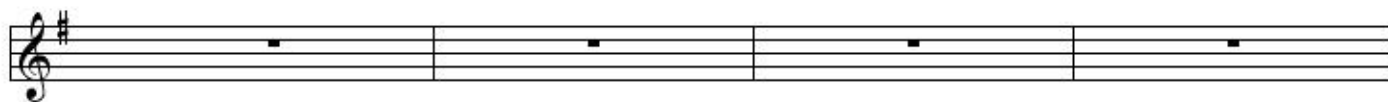
D. Allegro
Mendelssohn symphony "Italia"



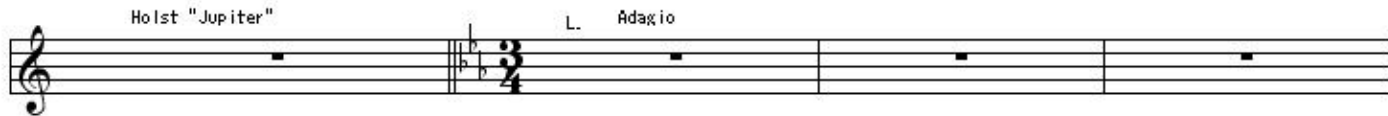
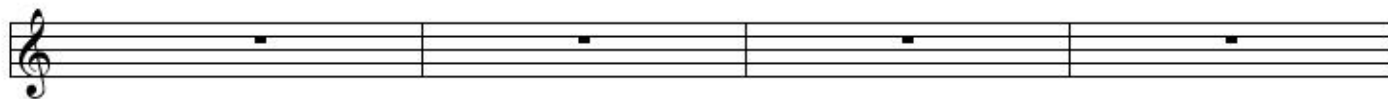
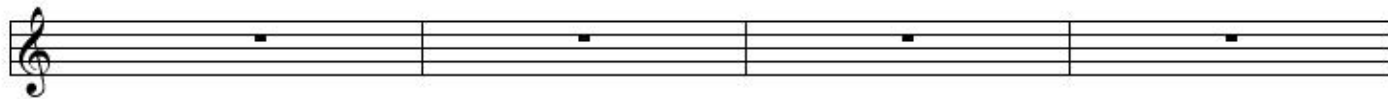
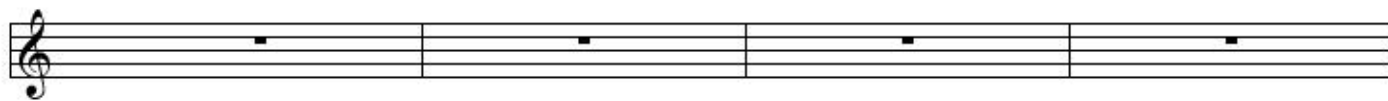
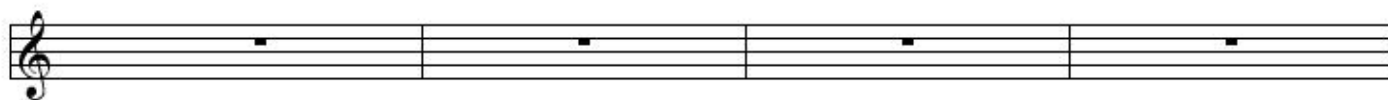
E. Largo
Beethoven Piano Sonata n.2



F. Allegro
Beethoven Violin Sonata "Spring"

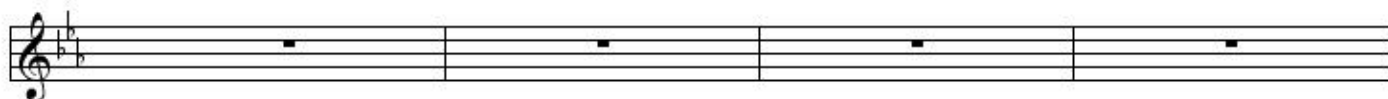
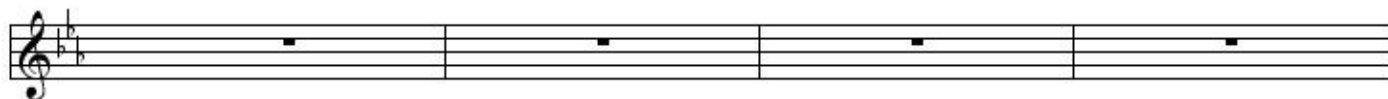
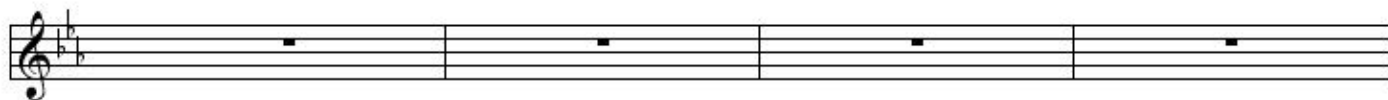


Sibelius "Finlandia"



Holst "Jupiter"

L. Adagio



M

N. Allegro
Gershwin "Rhapsody in Blue"

gliss

gliss

The image shows a musical score for flute parts. It consists of six staves. The first two staves are in 6/8 time and contain a melodic line with various ornaments and slurs. The third staff is in 4/4 time and is titled "N. Allegro Gershwin 'Rhapsody in Blue'". It features a melodic line with a glissando marking. The fourth and fifth staves are empty, with a long slur spanning across them. The sixth staff is also empty, with a few notes at the beginning and a double bar line.