

dame

Beethoven symphony No. 7 m. 1
Vivace

Trombone

Mozart Sonata for 2 pianos

B.
Allegro

leggero

C.
Mozart oboe concerto

Musical score for Mendelssohn's Symphony "Italia", D. Allegro, Trombone part. The score consists of seven staves of music. The first staff begins with a double bar line and a key signature change to B-flat major. The music features a mix of eighth and sixteenth notes, with some rests. The key signature changes to E-flat major in the sixth staff.

E. Largo
Beethoven Piano Sonata n. 2

Musical score for Beethoven's Piano Sonata n. 2, E. Largo, Trombone part. The score consists of two staves. The first staff begins with a double bar line and a key signature change to B-flat major. The music is mostly rests, with some eighth notes. The key signature changes to E-flat major in the second staff.

F. Allegro
Beethoven Violin Sonata "Spring"

Musical score for Beethoven's Violin Sonata "Spring", F. Allegro, Trombone part. The score consists of three staves. The first staff begins with a double bar line and a key signature change to B-flat major. The music is mostly rests, with some eighth notes. The key signature changes to E-flat major in the second staff.

G. Largo
Ravel "Bolero"

Musical score for Ravel's "Bolero", G. Largo, Trombone part. The score consists of four staves. The first staff begins with a double bar line and a key signature change to B-flat major. The music is mostly rests, with some eighth notes. The key signature changes to E-flat major in the second staff. The tempo marking "accel." is present above the fourth staff.

H. un poco sostenuto
Brahms Symphony No. 1

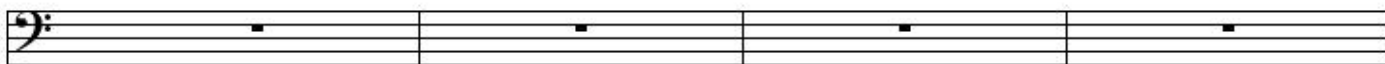
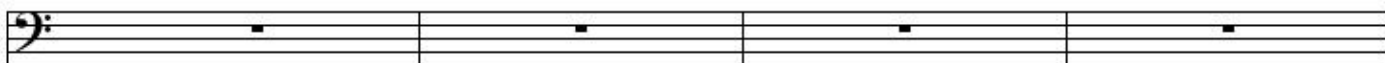
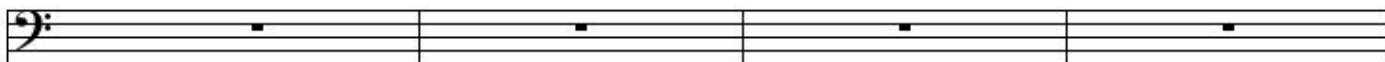
f legato

p

1.

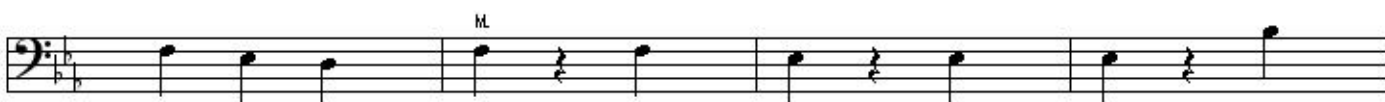
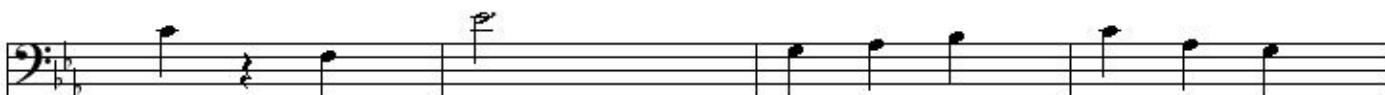
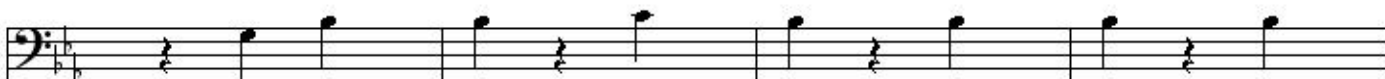
J. Allegro
Tchaikovsky Serenade for Strings "waltz"

Sibelius "Finlandia"



Holst "Jupiter"

L. Adagio



N. Allegro

Gershwin "Rhapsody in Blue"

