

dame

Beethoven symphony No. 7 n. 1  
Vivace

Viola

First system: *f*, *sf*, *sf*, *sf*

Second system: *sf*, *sf*, *ff*, *sf* (A.)

Third system: *sf*, *sf*, *sf*, *sf*

Fourth system: *sf*, *sf*, *sf*, *sf*

Mozart Sonata for 2 pianos

First system: *sf*, *sf*, *sf*, *sf*

B. Allegro

tr

leggero

C. Mozart oboe concerto

tr

Musical score for Mendelssohn's Symphony "Italia", D. Allegro, Viola part. The score consists of seven staves. The first staff begins with a treble clef, a key signature of one flat (B-flat), and a 3/4 time signature. It starts with a whole rest, followed by a double bar line, and then a series of eighth notes. The subsequent six staves continue the melodic line with various rhythmic patterns, including eighth and sixteenth notes, and rests.

E. Largo  
Beethoven Piano Sonata n. 2

Musical score for Beethoven's Piano Sonata n. 2, E. Largo, Viola part. The score consists of three staves. The first staff begins with a treble clef, a key signature of one flat (B-flat), and a 4/4 time signature. It features a series of eighth notes with a slur. The second and third staves continue the melodic line with similar rhythmic patterns and slurs.

F. Allegro  
Beethoven Violin Sonata "Spring"

Musical score for Beethoven's Violin Sonata "Spring", F. Allegro, Viola part. The score consists of one staff. It begins with a treble clef, a key signature of one flat (B-flat), and a 4/4 time signature. It features a series of eighth notes with a slur.

Empty musical staff with a treble clef, a key signature of one flat (B-flat), and a 4/4 time signature.

Empty musical staff with a treble clef, a key signature of one flat (B-flat), and a 3/4 time signature.

G. Largo  
Ravel "Bolero"

Empty musical staff with a treble clef, a key signature of one flat (B-flat), and a 3/4 time signature.

Empty musical staff with a treble clef, a key signature of one flat (B-flat), and a 3/4 time signature.

accel.

Empty musical staff with a treble clef, a key signature of one flat (B-flat), and a 3/4 time signature.

H. un poco sostenuto

dame(Viola)

Brahms Symphony No. 1

*f* espr. e legato

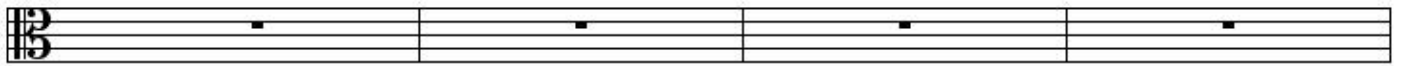
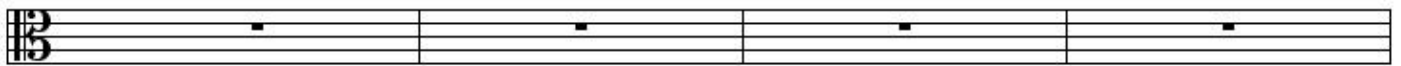
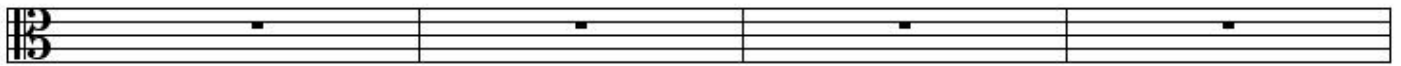
1.

poco *f*

J. Allegro  
Tchaikovsky Serenade for Strings "waltz"

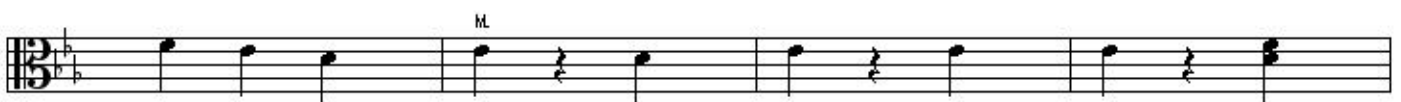
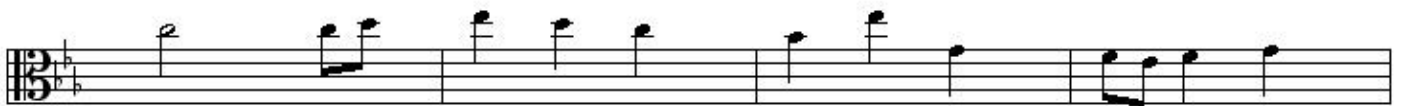
Sibelius "Finlandia"

The image shows a musical score for the Viola part, consisting of 13 staves. The first staff is the beginning of the Brahms Symphony No. 1, marked 'H. un poco sostenuto' and 'f espr. e legato'. The second staff continues the Brahms piece. The third staff is the beginning of the Tchaikovsky Serenade for Strings 'waltz', marked 'J. Allegro'. The fourth staff continues the Tchaikovsky piece. The fifth staff is the beginning of Sibelius 'Finlandia', marked '1.' and 'poco f'. The sixth staff continues the Sibelius piece. The seventh staff is the beginning of the Sibelius 'Finlandia' section. The eighth staff continues the Sibelius piece. The ninth staff is the beginning of the Sibelius 'Finlandia' section. The tenth staff continues the Sibelius piece. The eleventh staff is the beginning of the Sibelius 'Finlandia' section. The twelfth staff continues the Sibelius piece. The thirteenth staff is the beginning of the Sibelius 'Finlandia' section.



Holst "Jupiter"

L. Adagio



M.



M. Allegro

Gershwin "Rhapsody in Blue"

