

# dame

Beethoven symphony No. 7 n. 1  
Vivace

Cello

First movement of Beethoven's Symphony No. 7, first movement, Vivace. The score is written for Cello in bass clef, 6/8 time signature, and B-flat major. It consists of five staves. The first staff begins with a forte (*f*) dynamic and features a melodic line with slurs and accents. The second staff continues the melodic line with *f* and *ff* dynamics. The third and fourth staves show a rhythmic accompaniment of eighth notes. The fifth staff concludes the section with a final melodic phrase.

Mozart Sonata for 2 pianos

B.  
Allegro

leggero

Second movement of Mozart's Sonata for 2 pianos, marked B. Allegro. The score is written for Cello in bass clef, 4/4 time signature, and C major. It consists of six staves. The first staff begins with a piano (*p*) dynamic and features a melodic line with a trill (*tr*) and a *leggero* marking. The second staff continues the melodic line. The third and fourth staves show a rhythmic accompaniment of eighth notes. The fifth and sixth staves conclude the section with a final melodic phrase.

C.  
Mozart oboe concerto

Third movement of Mozart's Oboe Concerto. The score is written for Cello in bass clef, 4/4 time signature, and C major. It consists of six staves. The first staff begins with a piano (*p*) dynamic and features a melodic line with a trill (*tr*). The second and third staves show a rhythmic accompaniment of eighth notes. The fourth and fifth staves continue the rhythmic accompaniment. The sixth staff concludes the section with a final melodic phrase.

D. Allegro  
Mendelssohn symphony "Italia"

Musical score for D. Allegro, Mendelssohn symphony "Italia". The score consists of six staves of music. The first staff begins with a treble clef and a key signature of one flat (B-flat). The music features a melodic line with eighth and sixteenth notes, followed by a section with a 6/8 time signature. The subsequent staves contain rhythmic accompaniment, including eighth-note patterns and rests.

E. Largo  
Beethoven Piano Sonata n.2

Musical score for E. Largo, Beethoven Piano Sonata n.2. The score consists of two staves. The first staff shows a key signature change to two flats (B-flat and E-flat) and a 4/4 time signature. The music is mostly rests, indicating a slow, sustained section.

F. Allegro  
Beethoven Violin Sonata "Spring"

Musical score for F. Allegro, Beethoven Violin Sonata "Spring". The score consists of three staves. The first staff shows a key signature change to one flat (B-flat) and a 3/4 time signature. The music features a melodic line with quarter and eighth notes, followed by a section with a 3/4 time signature.

G. Largo  
Ravel "Bolero"

Musical score for G. Largo, Ravel "Bolero". The score consists of four staves. The first staff shows a key signature of one flat (B-flat) and a 3/4 time signature. The music is mostly rests, indicating a slow, sustained section. The word "accel." is written above the fourth staff. The score ends with a double bar line and a key signature change to two flats (B-flat and E-flat).

*f* espr. e legato

*tr*

*mp*

1.

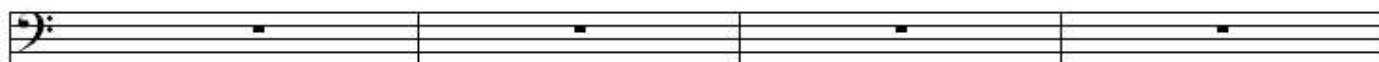
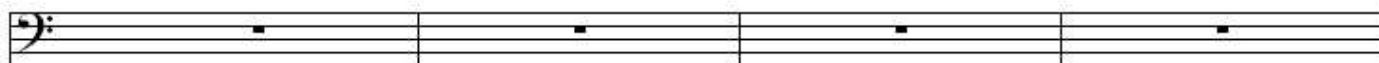
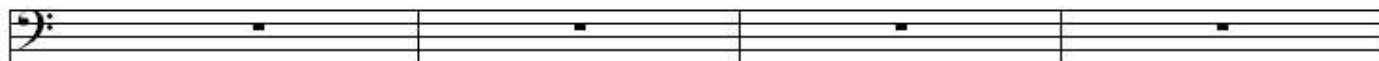
This section contains the first movement of Brahms' Symphony No. 1 for cello. It begins with a dynamic marking of *f* and the instruction *espr. e legato*. The music is in a minor key and 4/4 time. It features a prominent triplet of eighth notes in the first staff. A trill (*tr*) is marked in the fifth staff. The dynamic changes to *mp* in the fifth staff, and the time signature changes to 3/4. The first ending is marked with a '1.' above the staff.

J. Allegro  
Tchaikovsky Serenade for Strings "waltz"

This section contains the 'waltz' from Tchaikovsky's Serenade for Strings. It is marked *J. Allegro* and is in a major key with a 3/4 time signature. The music is characterized by a waltz-like feel with a strong bass line. The score consists of six staves of music, featuring various melodic lines and rests.

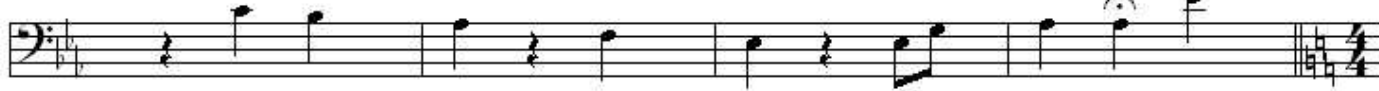
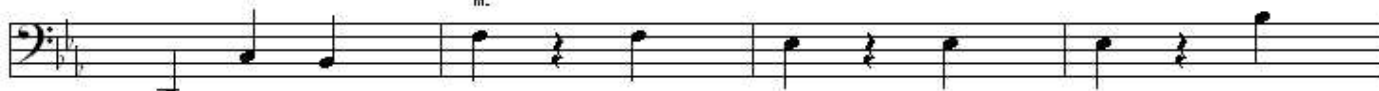
Sibelius "Finlandia"

This section contains the beginning of Sibelius' 'Finlandia'. It starts with a dynamic marking of *f* and the instruction *espr. e legato*. The music is in a major key and 4/4 time. The score consists of three staves of music, featuring a prominent melodic line in the first staff and rests in the subsequent staves.



Holst "Jupiter"

L. Adagio



M. Allegro

Gershwin "Rhapsody in Blue"

