

Scale Dur

Tempo=60

C-Dur

Tb

Two staves of musical notation in bass clef, 4/4 time. The first staff contains a whole rest followed by an eighth-note scale starting on C2. The second staff continues the scale with eighth notes and a quarter rest.

Des-Dur

simile

Two staves of musical notation in bass clef, 4/4 time. The first staff shows a key signature change to two flats (B-flat and E-flat) and begins the scale. The second staff continues the scale with eighth notes and a quarter rest.

D-Dur

Two staves of musical notation in bass clef, 4/4 time. The first staff shows a key signature change to two sharps (F-sharp and C-sharp) and begins the scale. The second staff continues the scale with eighth notes and a quarter rest.

Es-Dur

Two staves of musical notation in bass clef, 4/4 time. The first staff shows a key signature change to three sharps (F-sharp, C-sharp, and G-sharp) and begins the scale. The second staff continues the scale with eighth notes and a quarter rest.

E-Dur

Two staves of musical notation in bass clef, 4/4 time. The first staff shows a key signature change to four sharps (F-sharp, C-sharp, G-sharp, and D-sharp) and begins the scale. The second staff continues the scale with eighth notes and a quarter rest.

F-Dur

Two staves of musical notation in bass clef, 4/4 time. The first staff shows a key signature change to one flat (B-flat) and begins the scale. The second staff continues the scale with eighth notes and a quarter rest.

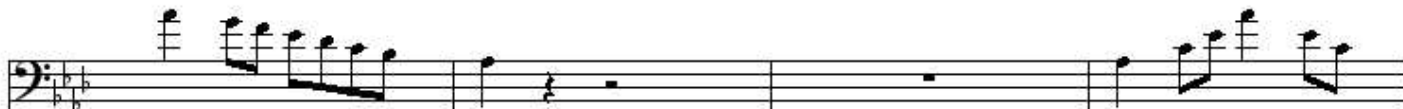
Fis(=Ges)-Dur



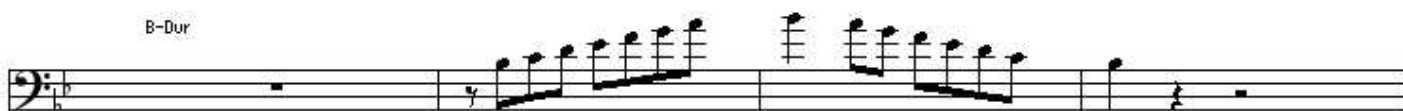
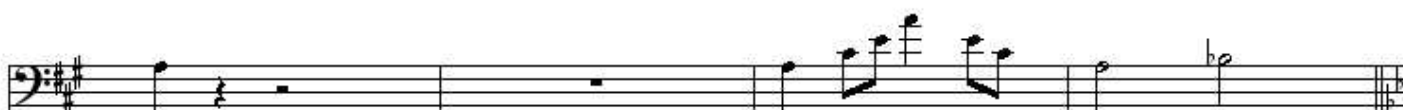
G-Dur



As-Dur



A-Dur



B-Dur



H-Dur

